

MONTHLY MEMBERSHIP PROGRESS REPORT

District 27 C2

Results as of: 12/31/2023

GMT:

LOCATION WISCONSIN

GMT CA

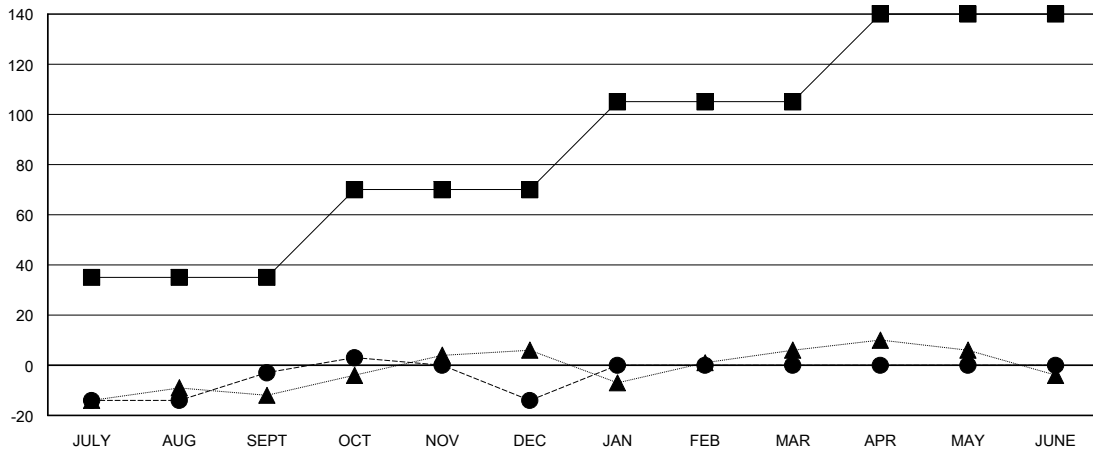
Clubs			
RESULTS FOR 2023-2024			
QUARTER	NEW CLUB GOAL	NEW CLUBS	DROPPED CLUBS
JULY/AUG/SEPT	0	0	0
OCT/NOV/DEC	1	0	0
JAN/FEB/MAR	0	0	0
APR/MAY/JUNE	0	0	0

Members			
RESULTS FOR 2023-2024			
QUARTER	MEMBER GROWTH NET GOAL	MEMBER GROWTH ACTUAL	DROPPED MEMBERS ACTUAL (including transfers)
JULY/AUG/SEPT	35	39	36
OCT/NOV/DEC	35	28	36
JAN/FEB/MAR	35	0	0
APR/MAY/JUNE	35	0	0

GOALS AND ACTUAL NEW CLUBS CUMULATIVE



GOALS AND ACTUAL MEMBERS CUMULATIVE



DROPPED CLUBS: 0	26 CLUBS OF 40 ADDED 1 OR MORE NEW MEMBERS	GENDER DISTRIBUTION MALE 918 (64.51%) FEMALE 505 (35.49%)
DROPPED MEMBERS DECEASED 14 CLUB CANCELLED 0 OTHER 58 TOTAL 72	CLICK HERE FOR CUMULATIVE MEMBERSHIP DATA	TOTAL FAMILY UNIT MEMBERS 352 FAMILY MEMBERS PAYING HALF DUES 178